

allmembersrecord

contents

introduction..... 3

installation and configuration..... 4

 installation..... 4

 configuration..... 6

 configuration – setting up paypal details 6

 configuration – adding/modifying/deleting membership types 7

 configuration – linking to membership form 8

 configuration – changing login module registration to link to membership registration 10

useful usage tips 11

 how to find an auth token (secure merchant account id) in paypal 11

support and help 13

licence 14

introduction

Thank you for choosing **allMembersRecord**.

This extension fills the gap between conventional paper based membership registration and the overly complex extensions that are available for Joomla!. The aim of allMembersRecord is to keep the process simple and functional for websites, where paying for membership does not necessarily equate to online benefits.

By installing this extension, guests to the website will be given the ability to sign up and pay for membership through a specified and integrated PayPal gateway. Within the extension is the ability to create multiple membership account types for varying time periods, and track who has and has not paid.

installing and configuring

Please remember that there are two pieces to this extension and **both must be installed** for it to run correctly. They are:

1. com_allmembersrecord.zip
2. mod_allmembersrecord_login.zip

installation

1. Begin by logging into the backend of the Joomla website that the extension will be installed in. To do this, go to website's address/URL and add the extension *administrator* to the end (for example Joomtraders would be: <http://www.joomtraders.com/administrator/>). Login into the page that appears using a correct username and password (figure 1.1).



The screenshot shows the Joomla! Administration Login page. At the top, the title "Joomla! Administration Login" is displayed in blue. Below the title, there is a message: "Use a valid username and password to gain access to the Administrator Back-end." and a link "Return to site Home Page". On the left side, there is a large padlock icon. On the right side, there is a login form with three input fields: "Username", "Password", and "Language" (set to "Default"). Below the "Language" field is a "Login" button with a green arrow icon.

Figure 1.1

- Once there has been a successful login into the backend, click on the **Extensions** drop down at the top of the website, and select **Install/Uninstall** (figure 1.2).

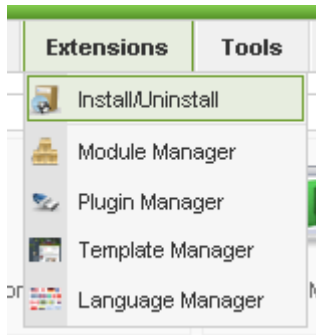


Figure 1.2

- On the next screen that appears, select **browse** from **Upload Package File** and select one of the two zip files for the extension. Once the first file has been selected, click on the **Upload File & Install** button (figure 1.3). After a successful install, repeat this process with the remaining file.

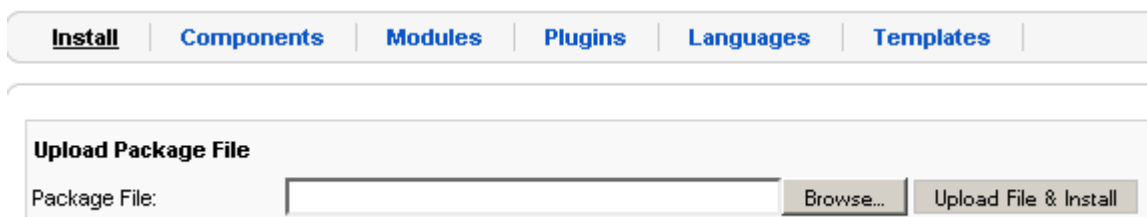


Figure 1.3

configuration

1. The configuration, membership and user payment settings and records for this extension reside within the component. In order to access the configuration settings, navigate and login to the backend of the website. Once logged in successfully, access the **Components** drop down menu at the top of the screen and select **allMembersRecord** (figure 2.1).

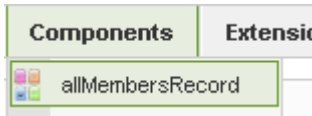


Figure 2.1

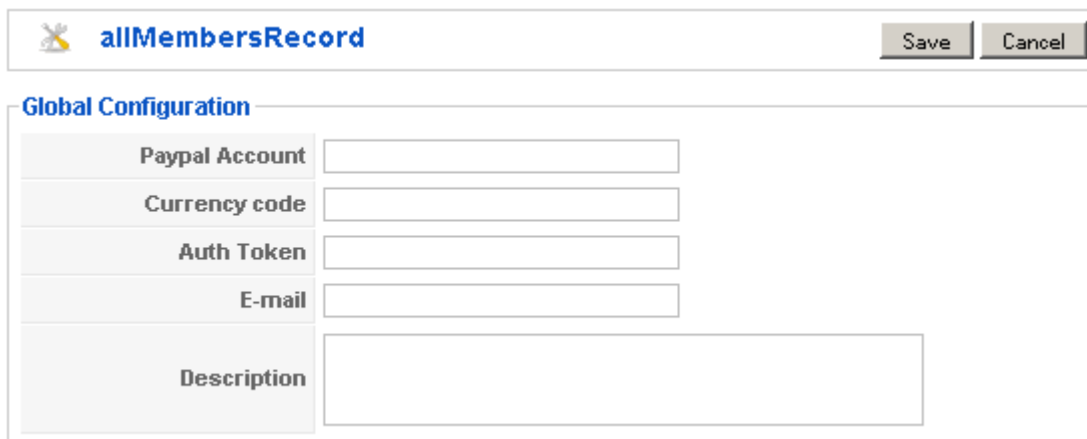
configuration – setting up paypal details

1. Once within the allMembersRecord component, select the **parameters** button which sit at the top far right hand side of the screen (figure 2.2).



Figure 2.2

2. A new window will pop up, with fields for inserting **PayPal account details**. Fill in the details and click on **save button** (figure 2.3).


 A screenshot of the 'allMembersRecord' parameters configuration window. The window title is 'allMembersRecord' and it has 'Save' and 'Cancel' buttons. The main content area is titled 'Global Configuration' and contains the following fields:

Paypal Account	<input type="text"/>
Currency code	<input type="text"/>
Auth Token	<input type="text"/>
E-mail	<input type="text"/>
Description	<input type="text"/>

Figure 2.3

PayPal Account: Insert the email of the PayPal account that you wish for the membership registration payments to be made to.

Currency Code: This ID references the currency type you wish for the payments to be made it, ie: Australian Dollars would be AUD.

Auth Token: Also known as “Identity Token can be found through the account settings when logged into the PayPal site. Please see the Useful tips section for more details.

Email: This email will receive account notification every time an account is successful made and paid for.

Description: This description box is a place to insert text before the “Pay with PayPal button”.

configuration – adding/modifying/deleting membership types

1. To add, modify or delete a membership type, head to the **allMembersRecord component** in the **Administration Backend**, look and click on the left hand menu item called **Type**, located under the heading **Options** (figure 2.4).

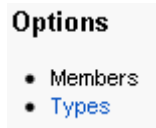


Figure 2.4

2. To **add** a new list, click on the **New** button located at the top far right of the screen (figure 2.5).



New

Figure 2.5

3. On the new page that appears, the editable parameters must be filled out completely in order to successfully add a new membership type (figure 2.6).

Membership Detail

Title:	<input style="width: 80%;" type="text"/>
Cost (\$):	<input style="width: 80%;" type="text"/>
Period (Days):	<input style="width: 80%;" type="text"/>
Published:	<input checked="" type="checkbox"/>

Figure 2.6

Title: Give the membership type a title. This will appear for visitors to see.

Cost: This is the cost of the membership type. The currency used is specified in the PayPal parameters.

Period (Days): This is the period of time in days that the membership will last for.

Published: Whether or not to publish the membership type to the public.

configuration – linking to membership form

1. In order to link to the **membership form**, a menu link to the component will need to be created. This is done by going into the **Administration Backend** and selecting a **menu** that the **registration link** will appear in (figure 2.7)

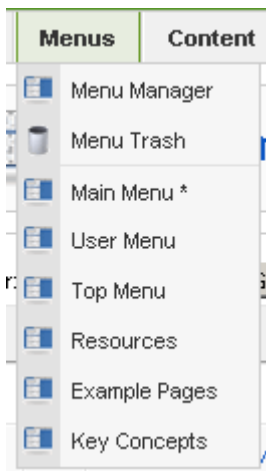


Figure 2.7

2. Once the menu has been selected, for example **Main Menu**, a new page will appear showing off all the links listed underneath that menu. Click on the **new button** (figure 2.8), located at the top right of this page to create a new link.



Figure 2.8

- On the new page that appears, select **allMembersRecord Default Layout** from under the tree: **Internal Link > allMembersRecord > Allmembersrecord > allMembersRecord default Layout** (figure 2.9).

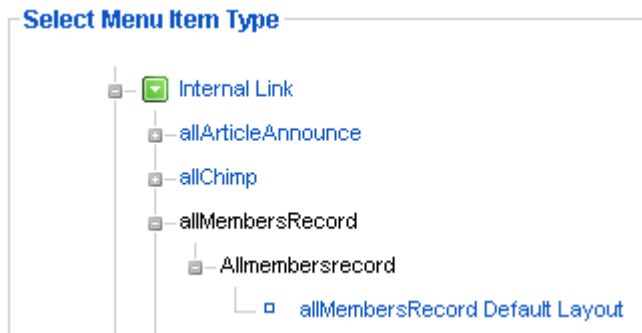


Figure 2.9

- On the next page, proceed by filling out the desired menu details and parameters and click on the **Save Button** at the top right of the screen (figure 2.10).



Figure 2.10

- The end result is a link, when clicked on, which links to the registration membership form (figure 2.10).

Main Menu

- Home
- Membership Link

Use an existing account
 Register a new account

Personal Detail

Fill all the fields, which with '*'

Name: *

Username: *

E-mail: *

Password: *

Verify Password: *

Contact Number:

Figure 2.11

configuration – changing login module registration to link to membership registration

1. **The module that is included within this extension does not need to be installed.** The purpose of the module is to be a replacement for the standard Joomla! login module if required, in order to make the new user registration link to the allMembersRecord new membership form.

Currently the extension will not unregister an account after a membership has expired; it will only show that they are unpaid. This feature will be coming in future version.

To enable this module, head to the **Extensions** dropdown located at the top of the screen within the Joomla! backend. Select **Module Manager** (figure 2.12).

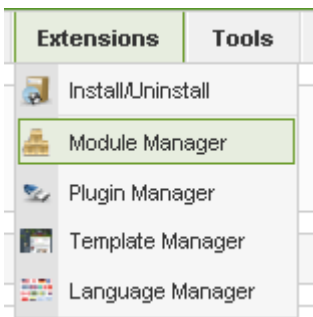


Figure 2.12

2. Once within **Module Manager**, select the filter field, type in the words “allmember” and press the **go** button. This will list the **allMembersRecord Login Module**. Select the module, by clicking on the title (figure 2.13).



Figure 2.13

3. Once the module is loaded, under **Parameters**, look to the bottom right of the screen and select **With allMembersRecord** to make the new membership registration link navigate to the new allMembersRecord registration form (figure 2.14).

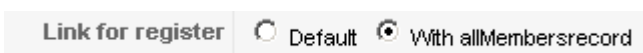


Figure 2.14

useful usage tips

how to find an auth token (secure merchant account id) in paypal

The purpose of using an auth token is to allow for the payment status for individual members within allMembersRecord to be updated automatically, without the need for administration intervention.

1. Start off by going to the PayPal website, which is located at <http://www.paypal.com> and login using the login menu on the left hand side (figure 3.1).

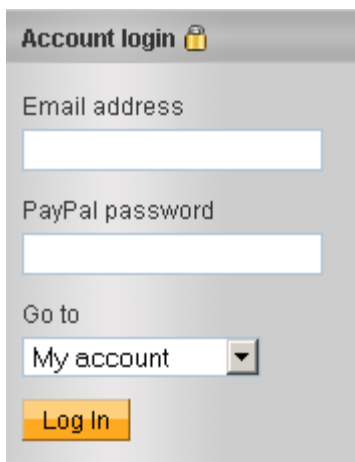


Figure 3.1

2. After a successful login, select the **Profile link** located as a sub menu of **My Account** (figure 3.2).



Figure 3.2

3. On the next page that appears, select the link called **Website Payment Preferences** located under **Selling Preferences** (figure 3.3).

Selling Preferences

- [Auctions](#)
- [Regional Tax](#)
- [Customer Service Message](#)
- [Website Payment Preferences](#)**

Figure 3.3

4. Scroll down to find **Payment Data Transfer (optional)** (figure 3.4). The auth token is the **Identity Token** displayed within this space.

Payment Data Transfer (optional)

Payment Data Transfer allows you to receive notification of successful payments as they are made. The use of Payment Data Transfer depends on your [system configuration](#) and your Return URL. Please note that to use Payment Data Transfer, you **must** turn on Auto Return.

Payment Data Transfer: On
 Off

Identity Token: EeZrPeeQvpF1h4ru34J0DEeZrPeeQvpF1h4ru34J0D

Figure 3.4

support and help

Further support and help regarding this extension can be sort using one of the following methods and by accessing the latest information on our website at <http://www.joomtraders.com>

- **Lodge a support ticket** <http://www.joomtraders.com/tickets.html>
- **Email us** support@joomtraders.com
- **Actively engage in discussions at our forums** <http://www.joomtraders.com/forum.html>
- **Check for updated documents.**

This documentation was last updated on the 11th of January 2010.

licence

GNU GENERAL PUBLIC LICENSE

Version 2, June 1991

Copyright (C) 1989, 1991 Free Software Foundation, Inc.
59 Temple Place - Suite 330, Boston, MA 02111-1307, USA

Everyone is permitted to copy and distribute verbatim copies of this license document, but changing it is not allowed.

Preamble

The licenses for most software are designed to take away your freedom to share and change it. By contrast, the GNU General Public License is intended to guarantee your freedom to share and change free software--to make sure the software is free for all its users. This General Public License applies to most of the Free Software Foundation's software and to any other program whose authors commit to using it. (Some other Free Software Foundation software is covered by the GNU Library General Public License instead.) You can apply it to your programs, too.

When we speak of free software, we are referring to freedom, not price. Our General Public Licenses are designed to make sure that you have the freedom to distribute copies of free software (and charge for this service if you wish), that you receive source code or can get it if you want it, that you can change the software or use pieces of it in new free programs; and that you know you can do these things.

To protect your rights, we need to make restrictions that forbid anyone to deny you these rights or to ask you to surrender the rights. These restrictions translate to certain responsibilities for you if you distribute copies of the software, or if you modify it.

For example, if you distribute copies of such a program, whether gratis or for a fee, you must give the recipients all the rights that you have. You must make sure that they, too, receive or can get the source code. And you must show them these terms so they know their rights.

We protect your rights with two steps: (1) copyright the software, and (2) offer you this license which gives you legal permission to copy, distribute and/or modify the software.

Also, for each author's protection and ours, we want to make certain that everyone understands that there is no warranty for this free software. If the software is modified by someone else and passed on, we want its recipients to know that what they have is not the original, so that any problems introduced by others will not reflect on the original authors' reputations.

Finally, any free program is threatened constantly by software patents. We wish to avoid the danger that redistributors of a free program will individually obtain patent licenses, in effect making the program proprietary. To prevent this, we have made it clear that any patent must be licensed for everyone's free use or not licensed at all.

The precise terms and conditions for copying, distribution and modification follow.

TERMS AND CONDITIONS FOR COPYING, DISTRIBUTION AND MODIFICATION

0. This License applies to any program or other work which contains a notice placed by the copyright holder saying it may be distributed under the terms of this General Public License. The "Program", below, refers to any such program or work, and a "work based on the Program" means either the Program or any derivative work under copyright law: that is to say, a work containing the Program or a portion of it, either verbatim or with modifications and/or translated into another language. (Hereinafter, translation is included without limitation in the term "modification".) Each licensee is addressed as "you".

Activities other than copying, distribution and modification are not covered by this License; they are outside its scope. The act of running the Program is not restricted, and the output from the Program is covered only if its contents constitute a work based on the Program (independent of having been made by running the Program). Whether that is true depends on what the Program does.

1. You may copy and distribute verbatim copies of the Program's source code as you receive it, in any medium, provided that you conspicuously and appropriately publish on each copy an appropriate copyright notice and disclaimer of warranty; keep intact all the notices that refer to this License and to the absence of any warranty; and give any other recipients of the Program a copy of this License along with the Program.

You may charge a fee for the physical act of transferring a copy, and you may at your option offer warranty protection in exchange for a fee.

2. You may modify your copy or copies of the Program or any portion of it, thus forming a work based on the Program, and copy and distribute such modifications or work under the terms of Section 1 above, provided that you also meet all of these conditions:

- **a)** You must cause the modified files to carry prominent notices stating that you changed the files and the date of any change.
- **b)** You must cause any work that you distribute or publish, that in whole or in part contains or is derived from the Program or any part thereof, to be licensed as a whole at no charge to all third parties under the terms of this License.
- **c)** If the modified program normally reads commands interactively when run, you must cause it, when started running for such interactive use in the most ordinary way, to print or display an announcement including an appropriate copyright notice and a notice that there is no warranty (or else, saying that you provide a warranty) and that users may redistribute the program under these conditions, and telling the user how to view a copy of this License. (Exception: if the Program itself is interactive but does not normally print such an announcement, your work based on the Program is not required to print an announcement.)

These requirements apply to the modified work as a whole. If identifiable sections of that work are not derived from the Program, and can be reasonably considered independent and separate works in themselves, then this License, and its terms, do not apply to those sections when you distribute them as separate works. But when you distribute the same sections as part of a whole which is a work based on the Program, the distribution of the whole must be on the terms of this License, whose permissions for other licensees extend to the entire whole, and thus to each and every part regardless of who wrote it.

Thus, it is not the intent of this section to claim rights or contest your rights to work written entirely by you; rather, the intent is to exercise the right to control the distribution of derivative or collective works based on the Program.

In addition, mere aggregation of another work not based on the Program with the Program (or with a work based on the Program) on a volume of a storage or distribution medium does not bring the other work under the scope of this License.

3. You may copy and distribute the Program (or a work based on it, under Section 2) in object code or executable form under the terms of Sections 1 and 2 above provided that you also do one of the following:

- **a)** Accompany it with the complete corresponding machine-readable source code, which must be distributed under the terms of Sections 1 and 2 above on a medium customarily used for software interchange; or,
- **b)** Accompany it with a written offer, valid for at least three years, to give any third party, for a charge no more than your cost of physically performing source distribution, a complete machine-readable copy of the corresponding source code, to be distributed under the terms of Sections 1 and 2 above on a medium customarily used for software interchange; or,
- **c)** Accompany it with the information you received as to the offer to distribute corresponding source code. (This alternative is allowed only for noncommercial distribution and only if you received the program in object code or executable form with such an offer, in accord with Subsection b above.)

The source code for a work means the preferred form of the work for making modifications to it. For an executable work, complete source code means all the source code for all modules it contains, plus any associated interface definition files, plus the scripts used to control compilation and installation of the executable. However, as a special exception, the source code distributed need not include anything that is normally distributed (in either source or binary form) with the major components (compiler, kernel, and so on) of the operating system on which the executable runs, unless that component itself accompanies the executable.

If distribution of executable or object code is made by offering access to copy from a designated place, then offering equivalent access to copy the source code from the same place counts as distribution of the source code, even though third parties are not compelled to copy the source along with the object code.

4. You may not copy, modify, sublicense, or distribute the Program except as expressly provided under this License. Any attempt otherwise to copy, modify, sublicense or distribute the Program is void, and will automatically terminate your rights under this License. However, parties who have received copies, or rights, from you under this License will not have their licenses terminated so long as such parties remain in full compliance.

5. You are not required to accept this License, since you have not signed it. However, nothing else grants you permission to modify or distribute the Program or its derivative works. These actions are prohibited by law if you do not accept this License. Therefore, by modifying or distributing the Program (or any work based on the Program), you indicate your acceptance of this License to do so, and all its terms and conditions for copying, distributing or modifying the Program or works based on it.

6. Each time you redistribute the Program (or any work based on the Program), the recipient automatically receives a license from the original licensor to copy, distribute or modify the Program subject to these terms and conditions. You may not impose any further restrictions on the recipients' exercise of the rights granted herein. You are not responsible for enforcing compliance by third parties to this License.

7. If, as a consequence of a court judgment or allegation of patent infringement or for any other reason (not limited to patent issues), conditions are imposed on you (whether by court order, agreement or otherwise) that contradict the conditions of this License, they do not excuse you from the conditions of this License. If you cannot distribute so as to satisfy simultaneously your obligations under this License and any other pertinent obligations, then as a consequence you may not distribute the Program at all. For example, if a patent license would not permit royalty-free redistribution of the Program by all those who receive copies directly or indirectly through you, then the only way you could satisfy both it and this License would be to refrain entirely from distribution of the Program.

If any portion of this section is held invalid or unenforceable under any particular circumstance, the balance of the section is intended to apply and the section as a whole is intended to apply in other circumstances.

It is not the purpose of this section to induce you to infringe any patents or other property right claims or to contest validity of any such claims; this section has the sole purpose of protecting the integrity of the free software distribution system, which is implemented by public license practices. Many people have made generous contributions to the wide range of software distributed through that system in reliance on consistent application of that system; it is up to the author/donor to decide if he or she is willing to distribute software through any other system and a licensee cannot impose that choice.

This section is intended to make thoroughly clear what is believed to be a consequence of the rest of this License.

8. If the distribution and/or use of the Program is restricted in certain countries either by patents or by copyrighted interfaces, the original copyright holder who places the Program under this License may add an explicit geographical distribution limitation excluding those countries, so that distribution is permitted only in or among countries not thus excluded. In such case, this License incorporates the limitation as if written in the body of this License.

9. The Free Software Foundation may publish revised and/or new versions of the General Public License from time to time. Such new versions will be similar in spirit to the present version, but may differ in detail to address new problems or concerns.

Each version is given a distinguishing version number. If the Program specifies a version number of this License which applies to it and "any later version", you have the option of following the terms and conditions either of that version or of any later version published by the Free Software Foundation. If the Program does not specify a version number of this License, you may choose any version ever published by the Free Software Foundation.

10. If you wish to incorporate parts of the Program into other free programs whose distribution conditions are different, write to the author to ask for permission. For software which is copyrighted by the Free Software Foundation, write to the Free Software Foundation; we sometimes make exceptions for this. Our decision will be guided

by the two goals of preserving the free status of all derivatives of our free software and of promoting the sharing and reuse of software generally.

NO WARRANTY

11. BECAUSE THE PROGRAM IS LICENSED FREE OF CHARGE, THERE IS NO WARRANTY FOR THE PROGRAM, TO THE EXTENT PERMITTED BY APPLICABLE LAW. EXCEPT WHEN OTHERWISE STATED IN WRITING THE COPYRIGHT HOLDERS AND/OR OTHER PARTIES PROVIDE THE PROGRAM "AS IS" WITHOUT WARRANTY OF ANY KIND, EITHER EXPRESSED OR IMPLIED, INCLUDING, BUT NOT LIMITED TO, THE IMPLIED WARRANTIES OF MERCHANTABILITY AND FITNESS FOR A PARTICULAR PURPOSE. THE ENTIRE RISK AS TO THE QUALITY AND PERFORMANCE OF THE PROGRAM IS WITH YOU. SHOULD THE PROGRAM PROVE DEFECTIVE, YOU ASSUME THE COST OF ALL NECESSARY SERVICING, REPAIR OR CORRECTION.

12. IN NO EVENT UNLESS REQUIRED BY APPLICABLE LAW OR AGREED TO IN WRITING WILL ANY COPYRIGHT HOLDER, OR ANY OTHER PARTY WHO MAY MODIFY AND/OR REDISTRIBUTE THE PROGRAM AS PERMITTED ABOVE, BE LIABLE TO YOU FOR DAMAGES, INCLUDING ANY GENERAL, SPECIAL, INCIDENTAL OR CONSEQUENTIAL DAMAGES ARISING OUT OF THE USE OR INABILITY TO USE THE PROGRAM (INCLUDING BUT NOT LIMITED TO LOSS OF DATA OR DATA BEING RENDERED INACCURATE OR LOSSES SUSTAINED BY YOU OR THIRD PARTIES OR A FAILURE OF THE PROGRAM TO OPERATE WITH ANY OTHER PROGRAMS), EVEN IF SUCH HOLDER OR OTHER PARTY HAS BEEN ADVISED OF THE POSSIBILITY OF SUCH DAMAGES.

END OF TERMS AND CONDITIONS

How to Apply These Terms to Your New Programs

If you develop a new program, and you want it to be of the greatest possible use to the public, the best way to achieve this is to make it free software which everyone can redistribute and change under these terms.

To do so, attach the following notices to the program. It is safest to attach them to the start of each source file to most effectively convey the exclusion of warranty; and each file should have at least the "copyright" line and a pointer to where the full notice is found.

one line to give the program's name and an idea of what it does.
Copyright (C) yyyy name of author

This program is free software; you can redistribute it and/or modify it under the terms of the GNU General Public License as published by the Free Software Foundation; either version 2 of the License, or (at your option) any later version.

This program is distributed in the hope that it will be useful, but WITHOUT ANY WARRANTY; without even the implied warranty of MERCHANTABILITY or FITNESS FOR A PARTICULAR PURPOSE. See the GNU General Public License for more details.

You should have received a copy of the GNU General Public License along with this program; if not, write to the Free Software Foundation, Inc., 59 Temple Place - Suite 330, Boston, MA 02111-1307, USA.

Also add information on how to contact you by electronic and paper mail.

If the program is interactive, make it output a short notice like this when it starts in an interactive mode:

```
Gnomovision version 69, Copyright (C) year name of author
Gnomovision comes with ABSOLUTELY NO WARRANTY; for details
type `show w'. This is free software, and you are welcome
to redistribute it under certain conditions; type `show c'
for details.
```

The hypothetical commands `show w' and `show c' should show the appropriate parts of the General Public License. Of course, the commands you use may be called something other than `show w' and `show c'; they could even be mouse-clicks or menu items-- whatever suits your program.

You should also get your employer (if you work as a programmer) or your school, if any, to sign a "copyright disclaimer" for the program, if necessary. Here is a sample; alter the names:

```
Yoyodyne, Inc., hereby disclaims all copyright
interest in the program `Gnomovision'
(which makes passes at compilers) written
by James Hacker.
```

```
signature of Ty Coon, 1 April 1989
Ty Coon, President of Vice
```

This General Public License does not permit incorporating your program into proprietary programs. If your program is a subroutine library, you may consider it more useful to permit linking proprietary applications with the library. If this is what you want to do, use the GNU Lesser General Public License instead of this License.